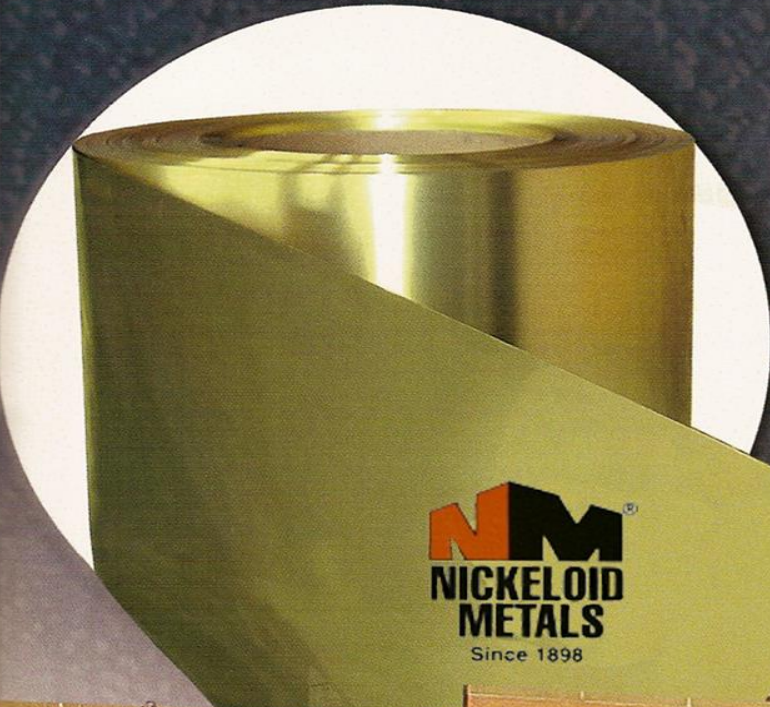


# American Nickeloid Company



**NM**<sup>®</sup>  
**NICKELOID**  
**METALS**  
Since 1898



AMERICAN NICKELOID CO.

*More Than A Metal – It's A Method<sup>®</sup>*

# 2 Facilities



American Nickeloid Company  
2900 West Main St.  
Peru, IL 61354



American Nickeloid Company  
131 Cherry St.  
Walnutport, PA 18088

# Quality Policy

To meet or exceed customer expectations through on-time delivery of cost-effective and high quality products with a commitment to continually improve the Quality Management System.

# ISO 9001:2008

## ABS Quality Evaluations

### Certificate Of Conformance

This is to certify that the Quality Management System of:

#### American Nickeloid

American Nickeloid - Headquarters  
2900 W Main Street  
Peru, IL 61354  
U.S.A.

(WITH ADDITIONAL FACILITIES LISTED ON ATTACHED ANNEX)

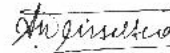
has been assessed by ABS Quality Evaluations, Inc. and found to be in conformance with the requirements set forth by:

**ISO 9001:2008**

The Quality Management System is applicable to:

**MANUFACTURE OF PLATED, COATED AND LAMINATED METAL COIL AND SHEET**

Certificate No: 34276  
Original Certification Date: 16 June 1999  
Effective Date: 29 April 2014  
Expiration Date: 09 May 2017  
Revision Date: 30 April 2014



Alex Weisselberg, President



Validity of this certificate is based on the periodic audits of the management system defined by the above scope and is contingent upon prompt, written notification to ABS Quality Evaluations, Inc. of significant changes to the management system or components thereof.

ABS Quality Evaluations, Inc. 16855 Northchase Drive, Houston, TX 77060, U.S.A.  
Validity of this certificate may be confirmed at [www.abs-qa.com/cert\\_validation](http://www.abs-qa.com/cert_validation).

Copyright 2011 ABS Quality Evaluations, Inc. All rights reserved.

# Coast Guard Certification



U. S. Department of Homeland Security  
**United States Coast Guard**  
**Certificate of Approval**

Coast Guard Approval Number: 164.112/127/0

Expires: 29 December 2014

INTERIOR FINISH (IMO)

American Nickeloid Company  
2900 W. Main Street  
Peru IL 61354-3703

Laminol Hot Dipped Galvanized Steel as meeting Parts 2 and 5 of Annex 1 of the IMO FTP Code.

Meets Part 2 of the FTP Code by complying with par. 2.2 of Annex 2 of the FTP Code.

Identifying Data: SWRI Project No. 01.14436.01.324 dated October 23, 2009, Follow-up document SwRI Project No. 01.25000.02.190, Rev. 0 issued December 2009, and USCG letter dated December 29, 2009.

Follow-up Program: SwRI.

Factories: Peru, IL. USA.

Approval valid only for products from above manufacturing facilities.



1408/09

The manufacturer is allowed to affix the Mark of Conformity according to Article 11 in the Council Directive 96/98/EC on Marine Equipment and issue a Declaration of Conformity as allowed by the "Agreement between the European Community and the United States of America on Mutual Recognition of Certificates of Conformity for Marine Equipment" signed February 2004 and by the "Agreement between the European Free Trade Association countries which are part of the European Economic Area and the United States of America on Mutual Recognition of Certificates of Conformity for Marine Equipment" signed October 2005. Item complies with requirements of Annex A.1, Item No. A.1/3.18 of the directive.

\*\*\* END \*\*\*

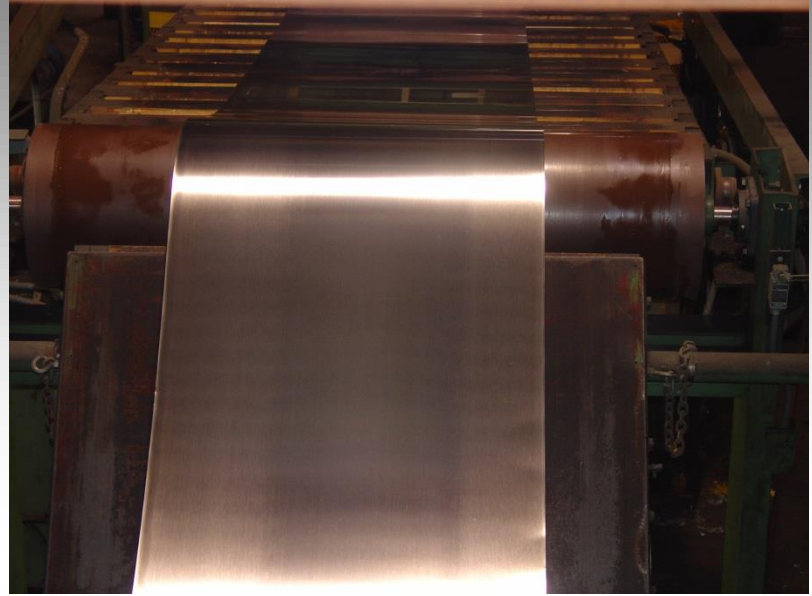
THIS IS TO CERTIFY THAT the above named manufacturer has submitted to the undersigned satisfactory evidence that the item specified herein complies with the applicable laws and regulations as outlined on the reverse side of this Certificate, and approval is hereby given. This approval shall be in effect until the expiration date hereon unless sooner canceled or suspended by proper authority.



GIVEN UNDER MY HAND THIS 29<sup>th</sup> DAY OF  
DECEMBER 2009, AT WASHINGTON D.C.

*K. J. Heinz*  
K. J. HEINZ  
Chief, Lifesaving and Fire Safety Division  
BY DIRECTION OF THE COMMANDANT

# Three Coating Lines



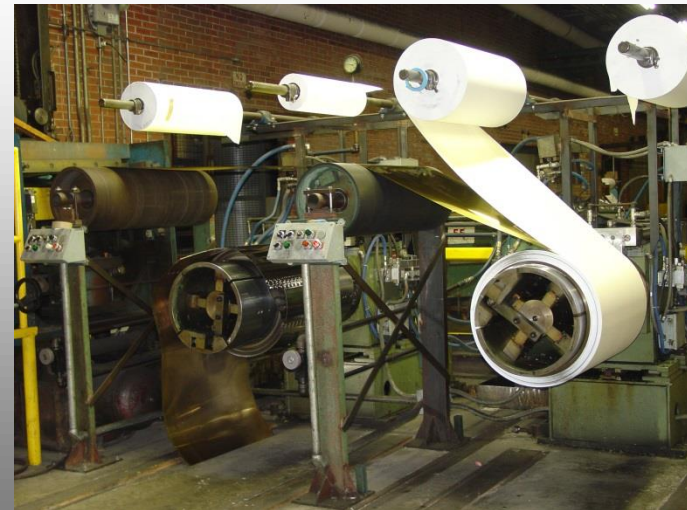
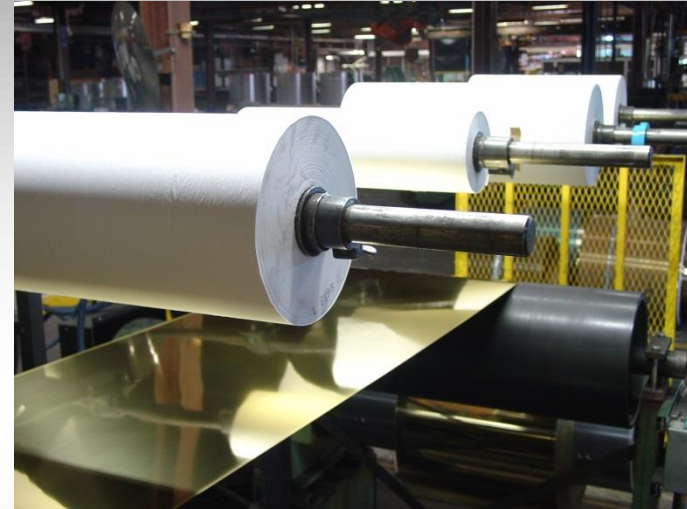
# Coating Capabilities

- Annual Capacity: 49,000 Tons
- Width                      Min 12”                      Max 60”
- Thickness                      Min .008”                      Max .097”
- Coil ID                      Charge 16”-24”                      Discharge 20”
- Coil OD                      Min 20”                      Max 60”
- Coil Weight                      Maximum 24,000 lbs

Single-pass four-coater/oven system

High gloss black capability

# Two Plating Lines And One Polishing Line



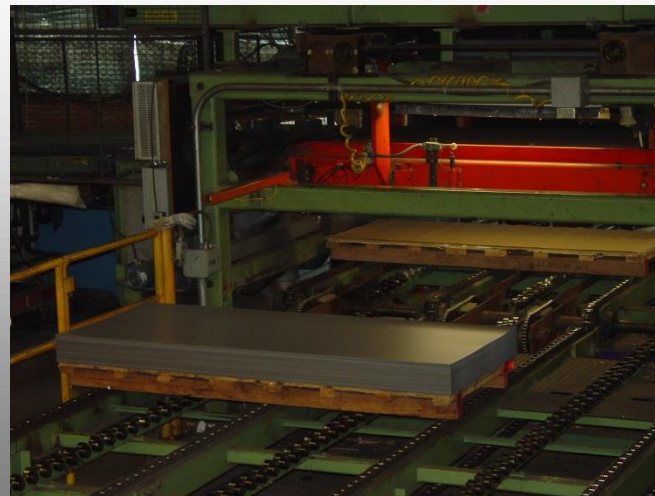
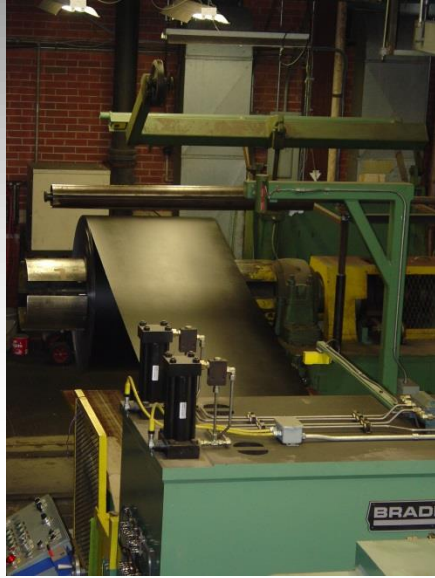


# Plating and Polishing Capabilities

- Annual Capacity: 36,000 Tons
- Width                      Min 12”                      Max 37”
- Thickness                      Min .008”                      Max .108”
- Coil OD                      Min 18”                      Max 42”
- Coil ID                      Charge 16”-24”                      Discharge 20”
- Coil Weight                      Maximum 9,200 lbs

Copper/Nickel/Chrome/Brass  
Bright and Satin Capabilities

# Two Cut-to-Length Lines

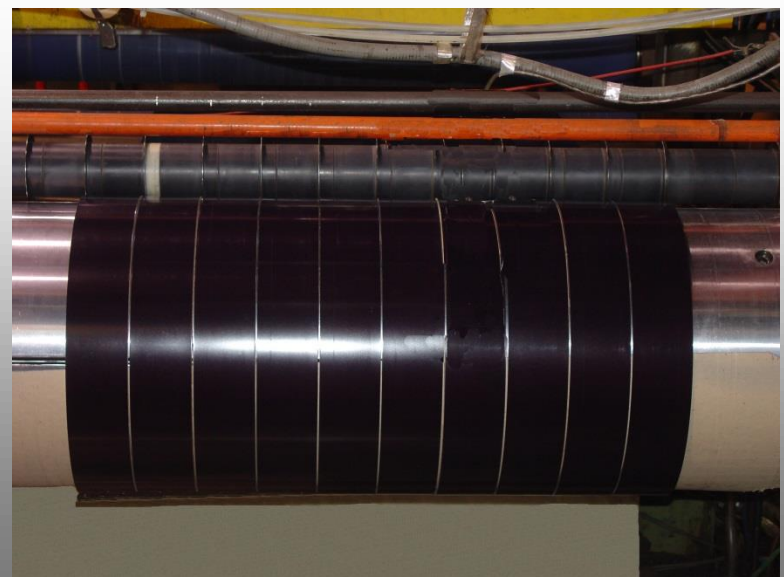
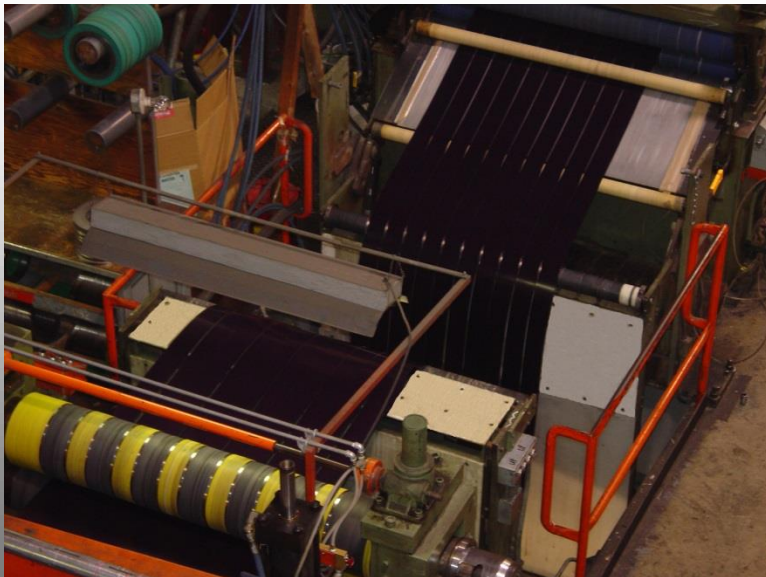
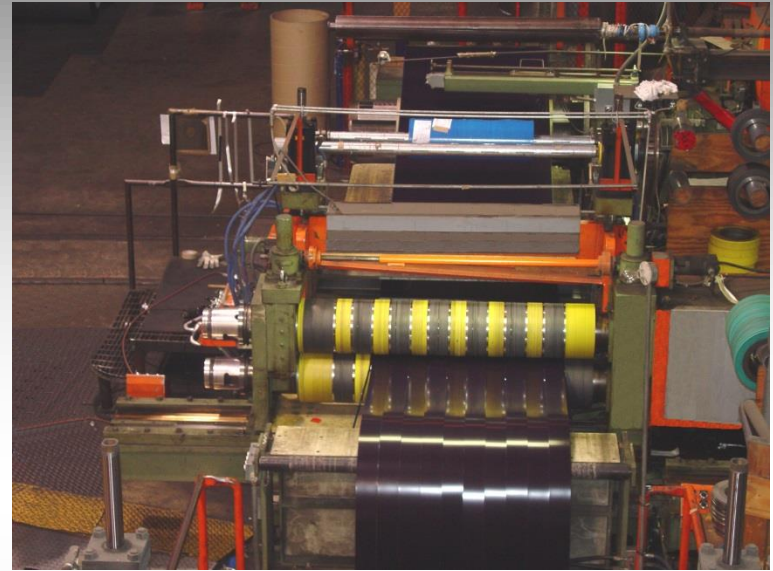
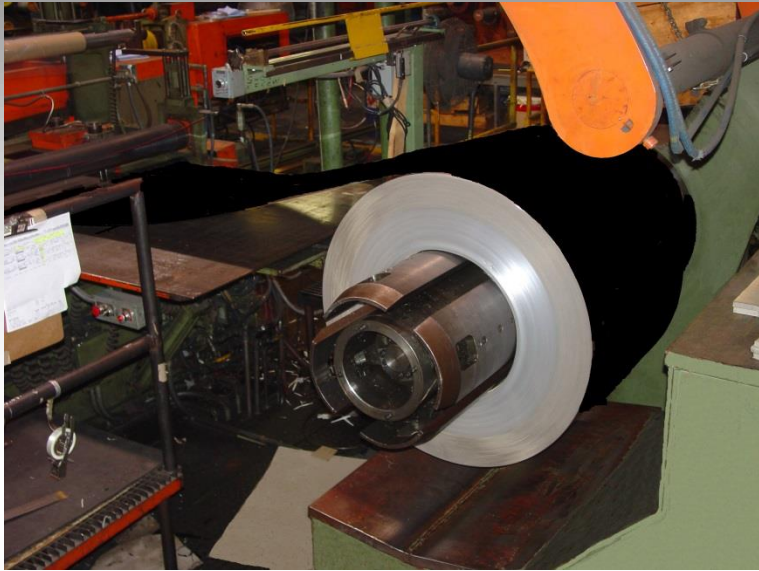


# Cut-to-Length Capabilities

- Annual Capacity: 32,000 Tons
- Width                      Min 1”                      Max 60”
- Length                      Min 5”                      Max 144”
- Coil OD                      Min 18”                      Max 60”
- Coil ID                      Charge 20” - 24”
- Coil Weight                Maximum 12,000 lbs

Corrective Leveling Capable  
Face To Face...Back To Back  
Sheet Stacking Capabilities

# Ten Slitting Lines



# Slitting Capabilities

- Annual Capacity: 72,000 Tons
- Width                      Min .250”      Max 60”
- Thickness                 Min .008”      Max .108”
- Coil OD                    Min 18”        Max 60”
- Coil ID                    Charge 16”-24”    Discharge 6”-24”
- Coil Weight                Maximum 20,000 lbs

Looping pit, protective film, interleave capabilities

Shimless technology

Tension controlled

# Product Availability

Substrate	Chrome	Nickel	Brass	Copper	Kotenol <sup>®</sup>	Laminol <sup>®</sup>	Fluorex <sup>®</sup>	Fluorinol <sup>®</sup>	Bakekote <sup>®</sup>
Cold Rolled	X	X	X	X	X	X			X
HD Galv					X	X			X
EG Galv					X	X			X
Stainless					X	X	X		X
Aluminum					X	X	X	X	X
Brass	X	X	X						X
Copper	X	X		X					X

# Laminol<sup>®</sup> Products



- Film/Metal Laminate
- Cold-rolled steel, galvanized steel, stainless steel or aluminum base
- Wood grains, leather look-alikes, fabrics and smooth finishes

# Laminates

- Composition: PVC, PET, Fluorocarbon
- Finish: Woodgrain, Camouflage, Solid Color, Smooth or Embossed
- Final Products: Enclosures, Shelving, Automotive Trim, Lighting



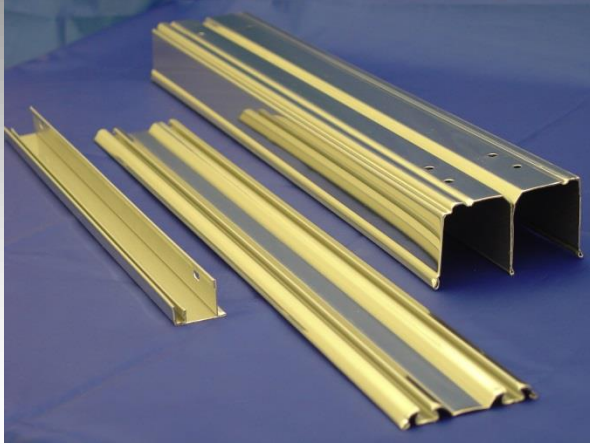
# Laminol<sup>®</sup>



# Kotenol<sup>®</sup>

- Substrate: Cold-Rolled, Electro-Galvanized, Hot-Dipped Galvanized, Aluminum, Stainless and Non Ferrous Metals
- Finish: High-Gloss, Low-Gloss
- Final Products: Appliance, Automotive, Electronics and Home Construction

# Kotenol®



# Fluorinol<sup>®</sup>



- Fluoropolymer coating
- Automotive and exterior application
- Excellent weather resistance
- Aluminum or stainless steel base

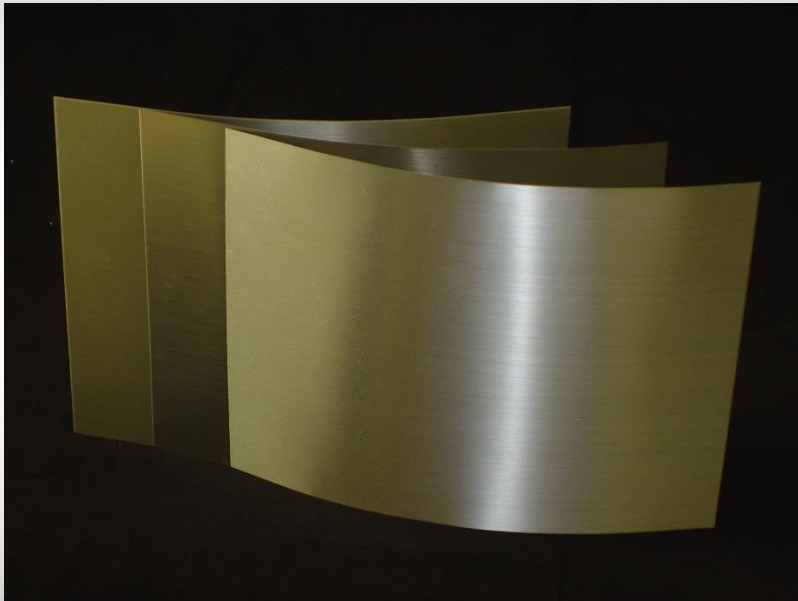


# Kote-Alume<sup>®</sup>



- Red Gold, Brass and natural Clear-Kote
- Bright or Satin Finishes
- Interior applications
- Light fixtures, panels and ceilings, hardware, appliances and housewares

# Custom Finishes



- Red Gold
- Dusky Nickel
- Bronzestone
- Antique
- Steel Base

# Anti-Fingerprint Coating



- Refrigerator Shrouds
- Steel Substrate
- Plate
- Level
- Coat
- Application of Indexed Protective Covering

# Plated

- Copper, Nickel, Chrome and Brass finishes in Bright and Satin
- Applications: Automotive trim, household and engineered functional items, lighting



# Plated



# Copper Products



- Bright, satin or antique finishes
- Cold-rolled steel base, brass base or solid copper
- Also available unpolished



# Nickel Products



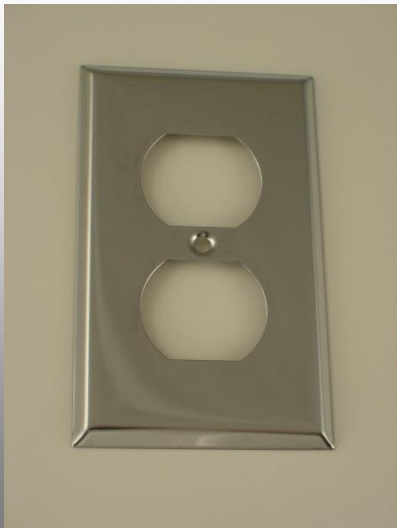
- Polished, satin or unpolished
- Steel, copper or brass base



# Chrome Products



- Pre-Plated Chromium
- Available with steel, copper or brass base
- Bright or Satin Finish



# Brass Products



- Bright, satin or antique finishes
- Available with steel base or solid brass



# Packaging

- Automated Pack Line
- Racking System
- Bar-Coded Tagging
- In-House Carpentry

# Packaging



# Research & Development



- Staffed Laboratory
- Electron Microscope
- Supply Certification  
Inbound & Outbound
- Wet/Solid Analysis
- Pilot Line/Testing



# Laboratory



# Why American Nickeloid ?

- One-Stop-Shop
- Single Bill
- Nickeloid Freight Options
- Stocking Programs
- Over 110 years of customer relationships

More than a Metal - It's a Method<sup>®</sup>

American Nickeloid Company

~~A Well Kept Secret!~~

